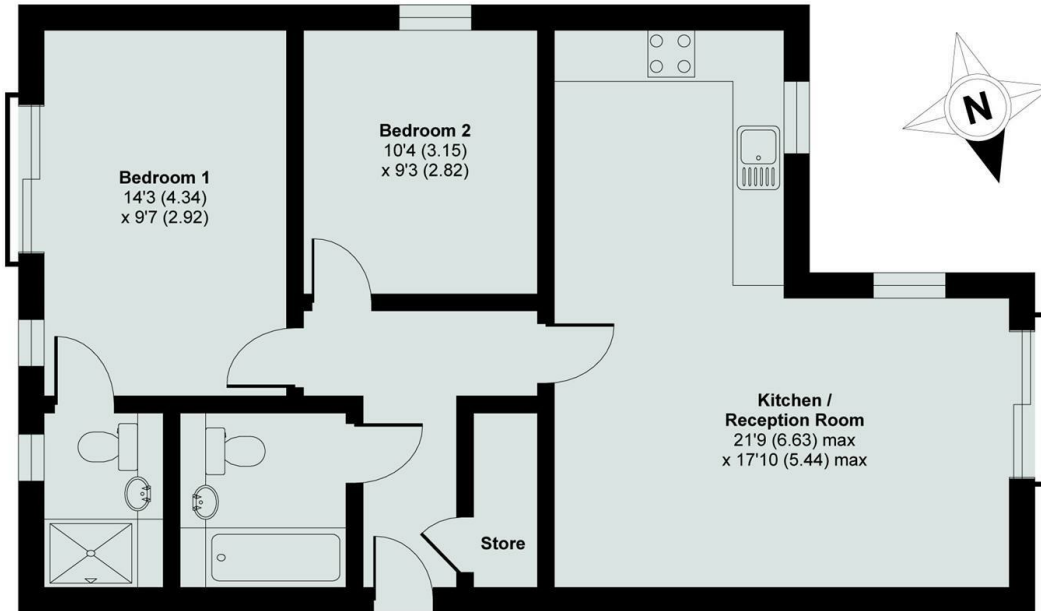




42F, Wootton Road Wootton Road, Abingdon, Oxon, £1,495 PCM - 8th July 2026.

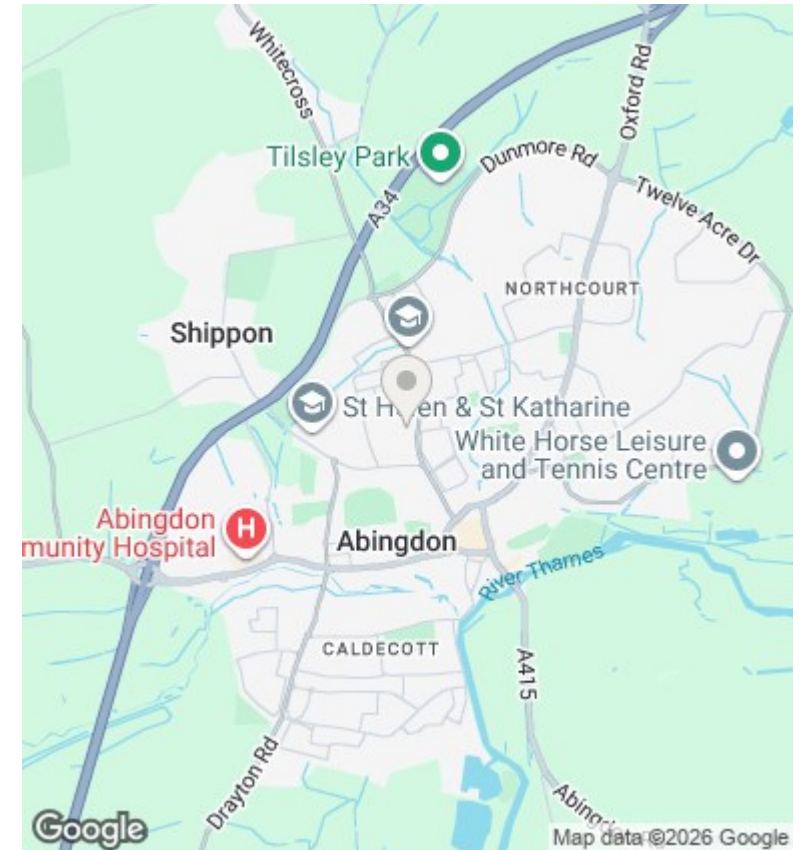
- 2 Bedroom First Floor Apartment
- 734 SQ FT
- Communal Satellite System
- Communal Garden
- 1 bathroom plus 1 ensuite
- Open plan style living/dining room and kitchen
- EPC BAND B COUNCIL TAX BAND C
- Parking for one car
- Bike Storage
- Gas Central Heating

APPROX. GROSS INTERNAL FLOOR AREA 734 SQ FT 68.1 SQ METRES



FIRST FLOOR

Copyright nichecom.co.uk 2015 Produced for Thomas Merrifield REF : 32963



Directions

Viewings

Viewings by arrangement only. Call 01235 554950 to make an appointment.

Council Tax Band

EPC Rating:

B

Energy Efficiency Rating		Current	Potential
<i>Very energy efficient - lower running costs</i>			
(92 plus) A			
(81-91) B		81	81
(69-80) C			
(55-68) D			
(39-54) E			
(21-38) F			
(1-20) G			
<i>Not energy efficient - higher running costs</i>			
England & Wales	EU Directive 2002/91/EC		